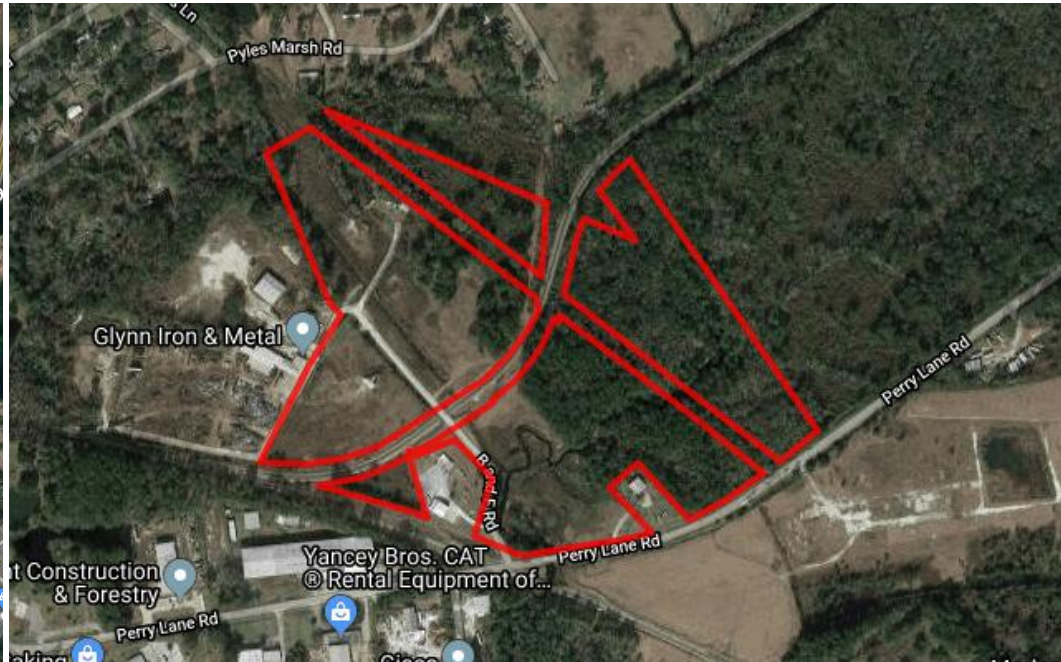
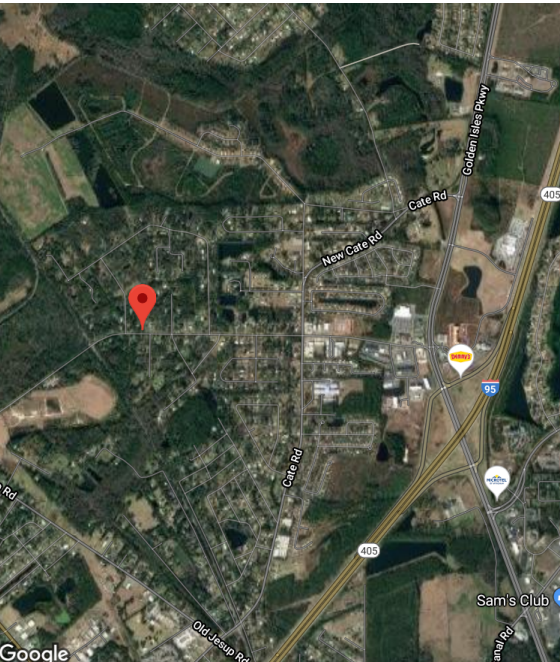
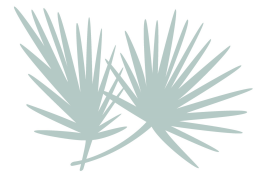


Perry Lane West Brunswick, GA 31525



FEATURES

- Sale
- 53 Total Acres
- Largest Tract: 11 Acres
- Zoned for Heavy Industrial
- Water and Sewer on site
- Rail

OVERVIEW

The Perry Lane Industrial Site is located in Glynn County, Georgia on Perry Lane Road with excellent access to U.S. Highway 341 and Interstate I-95. The property is suitable for a distribution site, manufacturing, warehouse facility, processing or assembly operations.

Utilities: Sewer is available at Perry Lane Road and U.S. Highway 341 and a 12" water main is located on Perry Lane Road in front of the property.



RYAN MOORE

President & CEO

ryanmoore@bwkeda.com

912-265-6629

1505 Richmond Street, 2nd Floor

Brunswick, GA 31520

GeorgiasGoldenOpportunity.com

About the Golden Isles

Midway between Savannah, Georgia, and Jacksonville, Florida the Golden Isles of Glynn County include St. Simons Island, Sea Island, Little St. Simons Island & the mainland city of Brunswick.

Industries Thriving on the Coast:

- Aerospace
- Metals, Machinery, and Chemical Manufacturing
- Food Industries and Processing
- Logistics and Distribution



Workforce at a glance

Brunswick, GA MSA Population: 118,456

Labor Force of Glynn County: 41,989

High Schools: 4

Golden Isles Career Academy: 17 career curriculum including Business Education, Manufacturing/Engineering, and Machining

Technical College: Coastal Pines

4 Year College: College of Coastal Georgia

"Certainly the decision to do business here was based on the quality of life, but also geographic location. For Kut Kwick it is important to be connected to other coastal cities by the interstate and four major ports so that we can get the supplies we require and sell our products more efficiently."

*--Daren Pietsch,
Torras Family Companies,
<https://kutkwick.com/>*